



RIMU
CHAROLAIS



First Annual Bull Sale

1 pm Monday 22nd May

20 Polled Charolais (6 Homozygous Polled)

140 Paparoa Road Taumarunui

The Rimu Story

Larraine and I are very excited for the first ever Rimu Charolais on farm bull sale. We are very proud of the lineup of bulls available for sale this year. They are the product of 24 years of calculated breeding decisions, we are confident they will go out and make their mark in your herd

In 2000 Larraine and I seized the opportunity to share farm this 800ha property located 10 mins from Taumarunui with the Salmon Family. The property ran 170 commercial angus cows and 3,000 romney ewes. I had seen the power the Charolais breed offers in a terminal cross during my time as a stock agent and knew I wanted to incorporate this cross into our farming system. We decided that starting a stud would be a great way to do this. The following year Rimu Charolais was established, after the purchase of seven foundation females from Rusty McIntyres Waimoe Stud. Numbers and the passion for breeding grew from there, currently Rimu Charolais consists of 75 registered females with a move towards polled animals without giving up any muscling.

Rimu Charolais have been breeding purebred Charolais cattle for 24 years, we want to make that very clear. 10 years ago, records of the females were lost, and due to Don's health at the time there was a period where the animals were not recorded. We have made a huge effort to right this, in last five years, with the help of another breeder, all animals are recorded and 100k snp tested (DNA tested). All animals are parent verified, although not all bulls are high graded, they are from pure Charolais lines, and this is proven in the DNA test results.

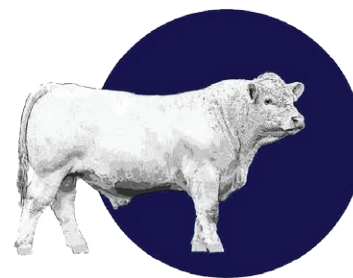
This year's bulls were used in late spring/early summer and as assurance to the buyer, have been semen and service tested. All bulls tested negative for BVD

The sale bulls will be penned from 11:00am on sale day for inspection.

Current weights and semen test results will be available on sale day. The bull actual 200, 400 and 600 day weights are included in the eBV table

We invite you to enjoy the hospitality on sale day.

Don and Larraine Dittmer



RIMU CHAROLAIS

FIRST ANNUAL BULL SALE THURSDAY 22ND MAY 2025 1PM

VENDORS

RIMU CHAROLAIS

Don Dittmer

Sale Venue: 140 Paparoa Road Taumarunui

Don: 027 478 1184

Watch the sale on:



Agents:

AUCTIONEER:

Neville Clark: 027 598 6537

PGG WRIGHTSONS:

Marty Cashin: 027 497 6414

NZ FARMERS LIVESTOCK:

Vaughan Rogers: 027 452 1568

Brett Wallbank: 027 488 1299



RIMU'S BREEDING PHILOSOPHY



It was the impressive ability to add muscling and growth to a terminal cross that first drew us to this breed and it's something we aim to improve in our herd. For 24 years we have been striving to breed cattle that are moderately framed but retain the muscling and growth rates that buyers expect from the Charolais breed. While also possessing a quiet, easy to handle disposition and have longevity. We think our line for the sale this year are the epiphany of this.

We have strived to accomplish these goals through the strategic selection of sires. Rimu Charolais have purchased two highly influential sires: Holster and Oatley, to achieve these targets

In 2014 we purchased Silverstream Holster. He has been a very successful sire here and in Australia, his track record speaks for itself. His exclusive semen rights were sold to Palgrove Charolais in Queensland. His first sons sold up to \$40,000 and daughters up to \$12,000. His semen also sold at auction for \$650/straw. Holster is still used in Palgrove's flush programme

"Holster has exceeded our expectations. His sons are thick and powerful with exceptional performance but also shows that much desired softness. He is an absolute no miss bull." – Ben Noller, Palgrove Charolais

Rimu have retained a lot of daughters from Holster, as you'll see in the pedigree of the bulls in this catalogue. We love the Holster cows, they are easy doing, hardy and milk well, but most of all they produce tremendous sons that really go out and preform.

We then recognised our clients wanted to purchase bulls that have calving ease/ low birth weight traits as well as guaranteed polled progeny. We have set out to meet these needs.

In 2016 We purchased Silverstream Oatley at 18 months old, sired by Sparrow Braxton, out of the Silverstream Ocelot cow family. The vigour from the Canadian and New Zealand genetics has really worked well for him (and us). He is a Homozygous polled bull who is a trait leader for calving ease and growth rates and has an amazing disposition.

We again sold exclusive semen rights to Palgrove Charolais. Oatley's first 12 sons sold at auction in Australia and averaged \$42,000 each, with one setting an Australian record selling for \$115,000.

We just love the calves Oatley produces, he has been a keystone in our breeding programme for a while now, we can't get enough of this guy and have had great feedback on his progeny. At 9 years old he's still in the paddock, very sound and was out working this mating season.

The sons from the Holster cows sired by Oatley bring the best of these two tremendous sires. Easy calving with plenty of power, structurally sound, quiet with longevity

SALE INFORMATION

CONDITIONS OF SALE:

1. The sale will be conducted under the terms and conditions set down by the New Zealand Stock and Station Agents Association. A copy of which will be posted on sale day.
2. 6% purchasing commission to recognised companies registered with NZ Stock and Station Agents Association.
3. Any dispute shall be settled by an arbitrator appointed by the auctioneers. The award of such arbitration shall be borne as ruled by arbitrator.

GUARANTEE:

1. All bulls are guaranteed breeders. If there are any claims made against the bulls. They should be made in writing within six months of the sale and accompanied by a veterinary certificate. Should the bull fail to breed to a satisfactory level this animal will either be replaced with an animal of comparable value or a credit given at the following sale. This does not include interest, expenses, costs and damages.

2. All bulls are sold with a 3-season foot guarantee which guarantees they are capable of natural service for a minimum of three seasons. This guarantee only covers faults due to poor conformation and doesn't cover obvious negligence on the part of the purchaser or faults due to injury or abscess. Any claims must be made in writing and accompany a veterinary report within 26 months of sale on a prorata basis. Remuneration will be made in the form of either a replacement animal or a credit at the next sale, with the bull being returned to Rimu. This guarantee does not include interest, expenses, costs or damages.

DELIVERY:

Delivery will be made as soon as possible after the sale. Please give clear instructions. There is space provided to do this in the back of this catalogue

HEALTH:

Rimu is T.B. and Brucellosis accredited herd. Status C10. All bulls have tested negative and been vaccinated for BVD.

BREEDING SOUNDNESS:

All bulls offered for sale have passed a semen and service testing carried out by Taraua Breeding Centre. A veterinary certificate is available on request.

TRANSFERS:

Cattle are fully recorded and transferable within Charolais Breeders N.Z Inc., located at Feilding.

DNA TESTING:

All of the bulls have had a 100k SNP test, horn test, Myo test (Myophosphorylase) and BPA test (Bovine Progressive Ataxia). All bulls are BPA and Myo negative. Horned results are displayed beside their names

INSPECTION:

Visitors are always welcome to come and view the bulls prior to the sale. There will be an official bull walk held on the 13th of May

REFRESHMENTS:

Complementary refreshments, beverages and food will be available to those attending the sale.

EBV's

EBV'S that are in the catalogue are Australasian Charolais Breedplan run. It is important to remember that they are still only an estimate of some productive traits which are relatively easy to measure, based on the amount of information available at the time. As stud breeders we see how animals EBV'S change from year to year. Even on proven high accuracy figures, when more information is collected. In many ways they are like an opinion poll, the more you ask the more likely you will get the true feeling. Out of 60 bulls you could for example expect 20 bulls actual breeding value to be significantly different to their EBV'S. Because of this we recommend that EBV'S be used as a guide along with other information provided, if you require assistance please ask. NB: For a full list of EBV'S or full pedigrees check the website: www.charolais.net.nz

Although care has been taken to ensure accuracy of information contained in this catalogue, no responsibility is accepted for any error or omission that might be contained herein.



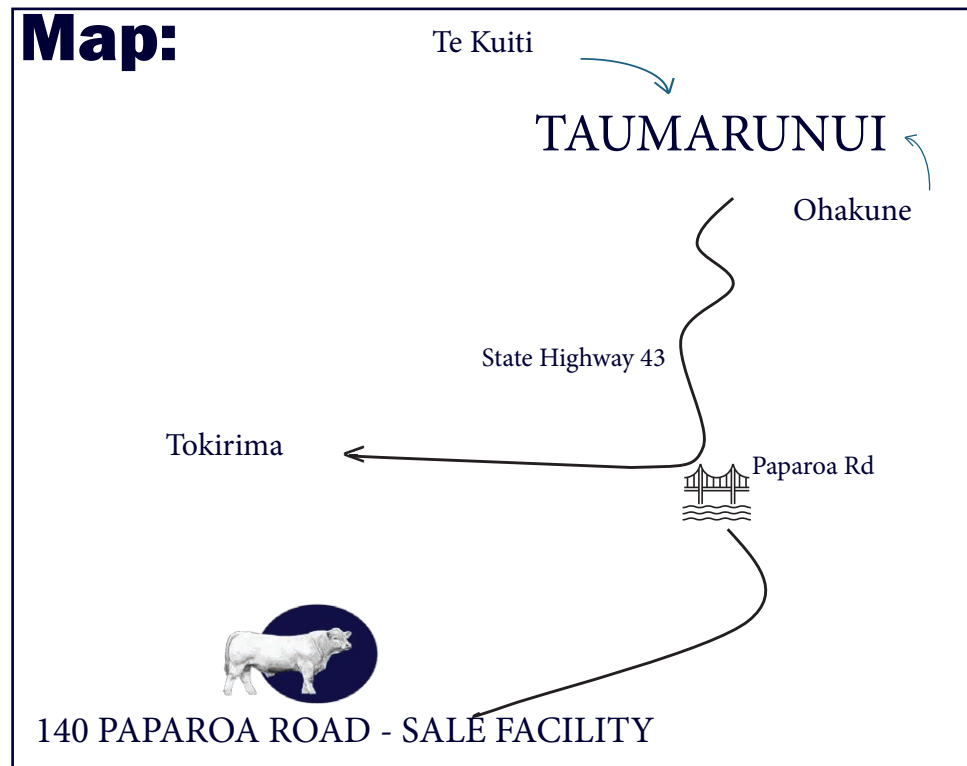
SALE DAY SAFETY:

Rimu is a working farm run under normal management conditions and certain dangers exist in relation to livestock and the farm environment. We would ask you to take care to ensure your personal safety and report any hazards to the Rimu staff. At Rimu we have put a lot of effort into bull temperament, and it is our aim to continually keep improving this trait. All the bulls have had a significant amount of handling, and we only put forward the bulls that display a satisfactory temperament, however, there are risks associated with bull behaviour on sale day. Please be aware the bulls are being put under a lot of natural pressure on this day, and they can fight and play. If you have limited mobility or have young children, it would be best to look at the bulls from outside the viewing pens.

Any questions get in touch with

Don Dittmer
027 478 1184

Map:



REF SIRE: SILVERSTREAM HOLSTER H187 P

BORN: 06.10.2012

083120187E

Heterozygous Polled



SILVERSTREAM BRUMBY B89 P

SILVERSTREAM EVOLUTION E168 P

SILVERSTREAM GLOSSY S120

SILVERSTREAM BENCHMARK B33 P

SILVERSTREAM JILLY E105 P

SILVERSTREAM JILLY C4

	GL	BW	200 WGT	400 WGT	600 WGT	SS	EMA	Rib	Rmp	IMF
EBV	-3.6	+1.4	+15	+29	+38	-0.2	+2.2	+0.9	+0.9	-0.3
	97%	95%	96%	95%	94%	95%	84%	89%	88%	84%
Avg	+2.8	+0.2	+12	+24	+31	+1.1	+1.6	+0.5	+0.5	+0.1

Holster's reputation both here and overseas, really speaks for itself. He is a tried-and-true producer, leaving sons that are real head turners at sales but also go out and perform, in both commercial and stud herds. Holster comes from a very good cow family, this is impart what drew Rimu's attention, good long lasting female lines. His dam, a Jilly cow from Silverstream, lived she was 15 years old and left some exceptional progeny. Holster has never let us down, he combines everything Rimu is looking for in a herd sire, thickness, power and performance with quiet disposition and longevity.

REF SIRE: SILVERSTREAM OATLEY O10 PP

BORN: 06.04.18

083180010E

Homozygous Polled



WINN MANS SKAGGS 663X P

SPARROWS BRAXTON 591C P

SPARROWS CASSINA 121X P

SILVERSTREAM EVOLUTION E168 P

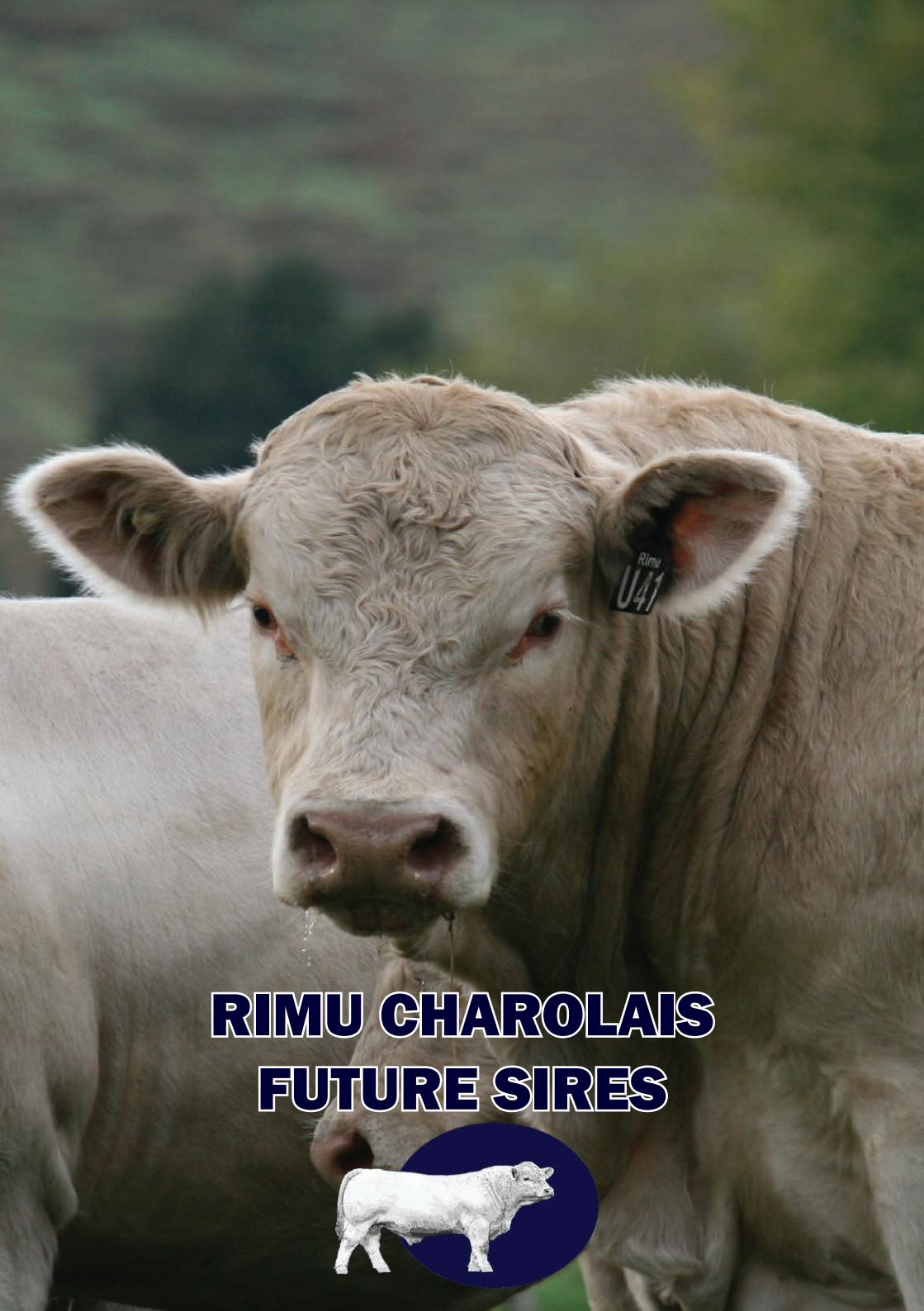
SILVERSTREAM OCELOT I100 P

SILVERSTREAM OCELOT V117

	GL	BW	200 WGT	400 WGT	600 WGT	SS	EMA	Rib	Rmp	IMF
EBV	-3.6	-1.2	+21	+41	+50	+0.6	-1.0	-0.1	-0.9	-0.8
	96%	94%	94%	94%	92%	94%	74%	85%	84%	74%
Avg	+2.8	+0.2	+12	+24	+31	+1.1	+1.6	+0.5	+0.5	+0.1

Oatley offers exceptional calving ease along with top end growth rates. The reception to his sons has exceeded our expectations. We love this bull but it's rewarding to know a lot of others do too. He produces sons that are powerful and well muscled but soft and easy to calve. He is a really reliable sire. Out of the great Silverstream Ocelot family. His Dam I100 is an exceptional cow herself, one of the legends of the Silverstream herd, she continues to produce top end progeny every year.

We just love the calves Oatley produces, he has been a keystone in our breeding programme for a while now, we can't get enough of this guy. Pictured recently at 9 years old he's still in the paddock, very sound and was out working this mating season.



**RIMU CHAROLAIS
FUTURE SIRES**



REF SIRE: SILVERSTREAM STERLING S92 PP

BORN: 02.09.21

083210092E

Homozygous Polled

SILVERSTREAM MAVERICK M183 P

SILVERSTREAM PADRA P7 P

SILVERSTREAM IZZY I125 P

SILVERSTREAM LAZARUS L111 P

SILVERSTREAM CHARLOTTE O200 P

SILVERSTREAM CHARLOTTE I154 P

	GL	BW	200 WGT	400 WGT	600 WGT	SS	EMA	Rib	Rmp	IMF
EBV	-0.7	+3.7	+20	+43	+48	+0.8	+0.8	-1.1	-1.7	-0.2
	73%	77%	74%	73%	73%	76%	53%	61%	59%	52%
Avg	+2.8	+0.2	+12	+24	+31	+1.1	+1.6	+0.5	+0.5	+0.1

Sterling has been used at Rimu for two seasons, so look forward to an opportunity to purchase his sons here next year. Sterling is by the infamous Silverstream Padra who boasts exceptional calving ease and growth traits. Padra has been used here, Australia, USA and in Canada, there's hot demand for Padra sons globally. Sterling is out of the Silverstream Charlotte family, another top end maternal line. It is very important to Rimu that herd sires come from reliable high performing, long lasting families and this one ticked all the boxes.

Sterling is leaving great shape and muscling on his progeny from a young age, he is homozygous polled and has great calving ease traits. Definitely one to watch out for in the future

REF SIRE: SILVERSTREAM TRANSTASMAN T217 PP

BORN: 04.10.22 083220217E Homozygous Polled



SILVERSTREAM JENSON J19 P
SILVERSTREAM NATIONAL N40 P
SILVERSTREAM OPIE G8 P
CARNOT P
SILVERSTREAM WENDY L128 P
SILVERSTREAM WENDY T63

	GL	BW	200 WGT	400 WGT	600 WGT	SS	EMA	Rib	Rmp	IMF
EBV	-2.2	+2.5	+20	+30	+54	+1.9	+2.6	-1.4	-2.3	-0.2
	68%	76%	72%	71%	73%	76%	53%	60%	58%	52%
Avg	+2.8	+0.2	+12	+24	+31	+1.1	+1.6	+0.5	+0.5	+0.1

Transtasman was purchased by Rimu last year, Don thought he was a stand-out of the Silverstream sale. A homozygous polled bull with plenty of meat, constitution, length and depth but maintains those star quality attributes like structure, balance, reign of neck and great mobility. Transtasman is an outcross for the Rimu herd, sired by the Silverstream National bull whose sons have been well received often generating top prices in their sale, and daughters have gone on to breed exceptionally well. Transtasman is out of the prestigious Wendy cow family. Transtasman is an exciting addition to the sire battery at Rimu, his first calves are expected this year



2025 SALE BULLS

LOT:1 RIMU ULTRA U4 P 741230004B

BORN: 21.05.2023 DNA: Dam & Sire Verified. Heterozygous Polled



SPARROWS BRAXTON 519C P (IMP CAN)

SILVERSTREAM OATLEY PP

SILVERSTREAM OCELOT I100 P

AUAHI C4

RIMU JESSIE 1409

	GL	BW	200 WGT	400 WGT	600 WGT	SS	EMA	Rib	Rmp	IMF
EBV	-2.2	-1.1	+13	+30	+38	+0.4	-0.4	0	-0.4	-0.4
	63%	65%	64%	62%	60%	61%	45%	54%	53%	45%
WGT			403 kg	712 kg	870 kg					
Avg	+2.8	+0.2	+12	+24	+31	+1.1	+1.6	+0.5	+0.5	+0.1

This is a real powerhouse of a bull to start the sale. A big May born bull, that is so correct and quiet. He carries a lot of power, at the same time is balanced and even. He's a super deep bull that displays a great strength of bone. A bull that will do well in a range of herds. Don is very proud to start his first sale with this bull.

Purchaser Price

LOT:2 RIMU UNIFORM U21 P 741230021C

BORN: 08.08.2023 DNA: Dam & Sire Verified. Heterozygous Polled



SPARROWS BRAXTON 519C P (IMP CAN)

SILVERSTREAM OATLEY PP

SILVERSTREAM OCELOT I100 P

SILVERSTREAM HOLSTER H187 P

RIMU IRIS 1712 P

RIMU IRIS 1315 P

	GL	BW	200 WGT	400 WGT	600 WGT	SS	EMA	Rib	Rmp	IMF
EBV	-3.1	-0.5	+17	+35	+49	+0.6	+0.4	+0.4	-0.2	-0.5
	64%	65%	66%	67%	69%	63%	48%	57%	55%	47%
WGT			371 kg	666 kg	774 kg					
Avg	+2.8	+0.2	+12	+24	+31	+1.1	+1.6	+0.5	+0.5	+0.1

There's no doubt Oatley has bred on tremendously well and Uniform U21, is up there with the best of his sons. This bull is a favourite of Dons from the 2025 group. He oozes muscle, depth and capacity wrapped in a soft skin, easy doing package. He is a great example of the best traits of Oatley and Holster. He's a real eye catcher, hard to fault this guy.

Purchaser Price

LOT:3 RIMU ULYSSES U22 P 741230022C

BORN: 08.08.2023 DNA: Dam & Sire Verified. Heterozygous Polled



SPARROWS BRAXTON 519C P (IMP CAN)
SILVERSTREAM OATLEY P
SILVERSTREAM OCELOT I100 P
SILVERSTREAM HOLSTER H187 P
RIMU GEMMA 1605 P
RIMU GEMMA 1117 P

	GL	BW	200 WGT	400 WGT	600 WGT	SS	EMA	Rib	Rmp	IMF
EBV	-2,3	+0.3	+16	+33	+46	+0.2	-0.2	+0.2	-0.2	-0.4
	66%	67%	67%	68%	70%	64%	49%	58%	56%	48%
WGT			362 kg	642 kg	748 kg					
Avg	+2.8	+0.2	+12	+24	+31	+1.1	+1.6	+0.5	+0.5	+0.1

This is an incredibly deep, thick set bull, with a lovely strong head. He has a tremendous spring of rib and capacious barrel. This bull will produce deep sided, soggy calves. A big bull that moves freely. Out of an older dam (2016 born) that has constantly impressed Don with the quality of progeny she has produced for him over the years and this guy is no exception.

Purchaser Price

LOT:4 RIMU ULTIMATE U33 PP 741230033E

BORN: 15.08.2023 DNA: Dam & Sire Verified. Homozygous Polled



SPARROWS BRAXTON 519C P (IMP CAN)
SILVERSTREAM OATLEY P
SILVERSTREAM OCELOT I100 P
SILVERSTREAM HOLSTER H187 P
RIMU IDA 1921 PP
RIMU A17 P

	GL	BW	200 WGT	400 WGT	600 WGT	SS	EMA	Rib	Rmp	IMF
EBV	-3.8	-0.2	+19	+37	+52	+0.4	+0.7	-0.3	-1.0	-0.7
	67%	65%	68%	68%	69%	65%	49%	58%	57%	49%
WGT			351 kg	642 kg	763 kg					
Avg	+2.8	+0.2	+12	+24	+31	+1.1	+1.6	+0.5	+0.5	+0.1

This is a very impressive homozygous polled, E grade bull. He is another fantastic example of the Oatley, Holster cross that has proven so successful. He's a very thick bull with ample carcass and a lot of stretch about him. A very quiet and easy to handle, top end bull. Don was so impressed with this bull he used him over his stud heifers.

Purchaser Price

LOT:5 RIMU UNICOL U19 P/Sc 741230019B

BORN: 07.08.2023 DNA: Dam & Sire Verified. Heterozygous Polled



SPARROWS BRAXTON 519C P (IMP CAN)
SILVERSTREAM OATLEY P
SILVERSTREAM OCELOT I100 P

RIMU FLEUR 1023 P

	GL	BW	200 WGT	400 WGT	600 WGT	SS	EMA	Rib	Rmp	IMF
EBV	-3.8	-0.2	+19	+37	+52	+0.4	+0.7	-0.3	-1.0	-0.7
	67%	65%	68%	68%	69%	65%	49%	58%	57%	49%
WGT			356 kg	650 kg	740 kg					
Avg	+2.8	+0.2	+12	+24	+31	+1.1	+1.6	+0.5	+0.5	+0.1

This is an amazingly quiet, bull beautifully balanced and conformationally very sound. He is square and meaty with a lovely hind quarter. Its hard not to love this guy, a bull that will do well in a wide range of operations. He was very easy to photograph, always pulling up square. We think this is an impressive versatile bull that will tick a lot of boxes.

Purchaser Price

LOT:6 RIMU UNGARRA U24 PP 741230024C

BORN: 10.08.2023 DNA: Dam & Sire Verified. Homozygous Polled



SPARROWS BRAXTON 519C P (IMP CAN)
SILVERSTREAM OATLEY PP
SILVERSTREAM OCELOT I100 P

SILVERSTREAM HOLSTER H187 P
RIMU JULIET 1918 P
RIMU JULIET 1401

	GL	BW	200 WGT	400 WGT	600 WGT	SS	EMA	Rib	Rmp	IMF
EBV	-2.9	-0.7	+12	+31	+36	+054	0.0	+0.2	-0.2	-0.6
	67%	68%	68%	68%	69%	65%	49%	58%	57%	49%
WGT			333 kg	616 kg	701 kg					
Avg	+2.8	+0.2	+12	+24	+31	+1.1	+1.6	+0.5	+0.5	+0.1

This is a really exciting homozygous polled bull, super correct with great feet and legs, he moves very well. Ungarra U24 has some impressive depth with a lovely strong topline and a big sires head.

Purchaser Price

LOT:7 RIMU UPMARKET U41 P/Sc 741230041C

BORN: 25.08.2023 DNA: Dam & Sire Verified. Heterozygous Polled



SPARROWS BRAXTON 519C P (IMP CAN)

SILVERSTREAM OATLEY PP

SILVERSTREAM OCELOT I100 P

SILVERSTREAM HOLSTER H187

RIMU GRACIE 1501

RIMU GRACIE 1118 P

	GL	BW	200 WGT	400 WGT	600 WGT	SS	EMA	Rib	Rmp	IMF
EBV	-3.2	-0.3	+18	+28	+41	+0.4	+0.3	+0.8	+0.5	-0.5
	66%	67%	67%	67%	69%	64%	49%	58%	56%	48%
WGT			348 kg	578 kg	698 kg					
Avg	+2.8	+0.2	+12	+24	+31	+1.1	+1.6	+0.5	+0.5	+0.1

We absolutely love this guy, he's out of 1501 one of the best cows in the herd. She is rising 10, if you're after a bull that's going to last, this one comes from a very proven line. 1501 was the first Holster calf bred by Rimu Charolais and leaves quite the legacy. She really sets the bar high, consistently weaning the heaviest calf of the season and this bull is no exception. Upmarket U41 is such a tribute to the Oatley, Holster cross he marries together everything we love about these two great sires. He's got the natural thickness and strength of bone, while also being smooth, clean and pet lamb quiet.

Purchaser Price

LOT:8 RIMU UMBER U52 P/Sc 741230052C

BORN: 15.09.2023 DNA: Dam & Sire Verified. Heterozygous Polled



SPARROWS BRAXTON 519C P (IMP CAN)

SILVERSTREAM OATLEY PP

SILVERSTREAM OCELOT I100 P

SILVERSTREAM HOLSTER H187 P

RIMU INDIE 1825

RIMU INDIE 1313

	GL	BW	200 WGT	400 WGT	600 WGT	SS	EMA	Rib	Rmp	IMF
EBV	-2.6	-0.5	+12	+28	+32	-0.3	+0.2	+0.1	-0.4	-0.4
	67%	68%	68%	66%	65%	65%	49%	58%	57%	49%
WGT			322 kg	600 kg	728 kg					
Avg	+2.8	+0.2	+12	+24	+31	+1.1	+1.6	+0.5	+0.5	+0.1

This is a really impressive bull, one of the youngest on offer. This bull is a great example of the old saying "it's length that weighs, and weight that pays." A bull that will add a lot of stretch to his progeny. Umber U52 is a bull who likes to show himself off, conformationally very sound and with a lovely nature.

Purchaser Price

LOT:9 RIMU UPDATE U14 PP 741230014B

BORN: 03.08.2023 DNA: Dam & Sire Verified. Homozygous Polled



SPARROWS BRAXTON 519C P (IMP CAN)

SILVERSTREAM OATLEY PP

SILVERSTREAM OCELOT I100 P

AUAHI C4 P

RIMU FRANKIE 1019 P

	GL	BW	200 WGT	400 WGT	600 WGT	SS	EMA	Rib	Rmp	IMF
EBV	-1.9	-1.0	+10	+23	+32	+0.5	-0.1	-0.3	-0.3	-0.4
	63%	66%	65%	66%	68%	62%	45%	55%	53%	45%
WGT			309 kg	584 kg	701 kg					
Avg	+2.8	+0.2	+12	+24	+31	+1.1	+1.6	+0.5	+0.5	+0.1

This is a bull with a lot of style and appeal, very smooth and clean. Update U14 is a bull that has a lot of potential and has a super nature. He is a lovely homozygous polled bull.

Purchaser Price

Desirabull
Photography and Design



"Elite genetics, catpured with precision"
Specialising in livestock catalogues
Emma Owen: 027 892 3720 emmaowen122@gmail.com

NZ FARMERS LIVESTOCK

Working with Farmers for Farmers

Proudly working with Rimu Charolais

At NZ Farmers Livestock, our clients benefit from our history and experience in the market. We bring extensive experience and knowledge gained through trusted and long-established relationships within the rural community. We add value for you, by supporting you, to market.

And, we understand **Finance**, and how important flexibility and speed of delivery is a necessity when it comes to farming. NZ Farmers Livestock Finance has a facility available for all your finance needs. We pride ourselves on our **fast acceptance and personal support**. Our dedicated agents are committed to supporting you.

For more information please contact:

Brent Bougen 027 210 4698

Vaughan Rogers 027 452 1568

MyLiveStock
Website | Mobile | App

LOT:10 RIMU UNION U13 P/Sc

741230013E

BORN: 03.08.2023 DNA: Dam & Sire Verified. Heterozygous Polled



SPARROWS BRAXTON 519C P (IMP CAN)

SILVERSTREAM OATLEY PP

SILVERSTREAM OCELOT I100 P

SILVERSTREAM JUROR J93 P

RIMU MAUDE 1905 P

RIMU MAUDE 1619

	GL	BW	200 WGT	400 WGT	600 WGT	SS	EMA	Rib	Rmp	IMF
EBV	-2.4	+0.7	+16	+34	+43	+0.7	-0.7	-0.2	-0.8	-0.5
	63%	65%	65%	66%	69%	62%	47%	56%	54%	46%
WGT			351 kg	650 kg	734 kg					
Avg	+2.8	+0.2	+12	+24	+31	+1.1	+1.6	+0.5	+0.5	+0.1

This is another very complete bull. He is a beautifully made E grade bull with a balanced carcass, a really nicely set shoulder that smoothly transitions into a great neck extension and head carriage. He is a free moving bull that has a lot of great attributes. An easy recommend

Purchaser Price

LOT:11 RIMU URBAN U15 P

741230015B

BORN: 04.08.2023 DNA: Dam & Sire Verified. Heterozygous Polled



SPARROWS BRAXTON 519C P (IMP CAN)

SILVERSTREAM OATLEY PP

SILVERSTREAM OCELOT I100 P

AUAHI C4 P

RIMU GEMMA 1117 P

	GL	BW	200 WGT	400 WGT	600 WGT	SS	EMA	Rib	Rmp	IMF
EBV	-1.9	-1.1	+9	+22	+26	0.0	-0.5	+0.4	0.0	-0.4
	63%	65%	65%	62%	61%	61%	45%	54%	54%	44%
WGT			230 kg	530 kg	661 kg					
Avg	+2.8	+0.2	+12	+24	+31	+1.1	+1.6	+0.5	+0.5	+0.1

Don't discount this bull, he had a premature weaning, unfortunately his dam died when he was only a few months old. At weaning he was only 230kg, the lightest bull by a mile, it's a credit to him, he is looking this good. It shows how much growth potential he has.

Purchaser Price

LOT:12 RIMU UPHAM U38 P/Sc 741230038B

BORN: 21.08.2023 DNA: Dam & Sire Verified. Heterozygous Polled



SILVERSTREAM OATLEY PP
SILVERSTREAM OCELOT I100 P
SILVERSTREAM HOLSTER H187 P
RIMU NIKKI 1713

	GL	BW	200 WGT	400 WGT	600 WGT	SS	EMA	Rib	Rmp	IMF
EBV	-2.9	-0.8	+11	+24	+26	+0.3	-0.6	0.0	-0.5	-0.5
	67%	68%	68%	68%	70%	66%	49%	59%	57%	49%
WGT			344 kg	606 kg	674 kg					
Avg	+2.8	+0.2	+12	+24	+31	+1.1	+1.6	+0.5	+0.5	+0.1

This bull displays all the appealing traits of the Oatley, Holster cross. A bull with scope and plenty of width and depth, and very easy doing. You will notice him in this strong pen of bulls

Purchaser Price

LOT:13 RIMU UPSTREAM U16 P/Sc 741230016B

BORN: 04.08.2023 DNA: Dam & Sire Verified. Heterozygous Polled



SILVERSTREAM OATLEY PP
SILVERSTREAM OCELOT I100 P
SILVERSTREAM HOLSTER H187 P
RIMU LILY 1514

	GL	BW	200 WGT	400 WGT	600 WGT	SS	EMA	Rib	Rmp	IMF
EBV	-3.3	-1.1	+11	+23	+30	+0.1	-0.6	-0.2	-0.8	-0.6
	66%	68%	67%	67%	69%	64%	49%	58%	56%	48%
WGT			373 kg	663 kg	736 kg					
Avg	+2.8	+0.2	+12	+24	+31	+1.1	+1.6	+0.5	+0.5	+0.1

This bull embodies everything Rimu is breeding for, with his tremendous topline, powerful and impressive shape. Upstream U16 is out of a well proven, rising 10 year old dam, who is still out on the hill getting the job done. We think this bull is going to add real thickness to his progeny, producing top yielding moderate framed cattle.

Purchaser Price

LOT:14 RIMU UMARI U39 P741230039C

BORN: 22.08.2023 DNA: Dam & Sire Verified. Heterozygous Polled



TURNBULLS DUTY-FREE 358D (IMP CAN)
SILVERSTREAM SAWLEY S11 PP
SILVERSTREAM IVY O160 P

SILVERSTREAM HOLSTER H187 P
RIMU JANE 2010 P
RIMU JANE 1404 P

	GL	BW	200 WGT	400 WGT	600 WGT	SS	EMA	Rib	Rmp	IMF
EBV	-3.2	0.0	+12	+28	+41	+1.2	+1.2	+0.5	+0.5	-0.3
	59%	60%	61%	63%	66%	56%	40%	59%	47%	39%
WGT			312 kg	586 kg	688 kg					
Avg	+2.8	+0.2	+12	+24	+31	+1.1	+1.6	+0.5	+0.5	+0.1

A bull that should appeal to commercial cattlemen, he possesses a great deal of length, clean shouldered with impressive neck extension. He moves well and is an out cross from this herd. Sired by Sawley who goes back to Turnbulls Duty Free, a Canadian sire who has really made his mark here as well as Canada

Purchaser Price

LOT:15 RIMU UPLAND U56 P/Sc741230056B

BORN: 27.09.2023 DNA: Dam & Sire Verified. Heterozygous Polled



SPARROWS BRAXTON 519C P (IMP CAN)
SILVERSTREAM OATLEY PP
SILVERSTREAM OCELOT I100 P

SILVERSTREAM HOLSTER H187 P
RIMU PHOEBE 1920

	GL	BW	200 WGT	400 WGT	600 WGT	SS	EMA	Rib	Rmp	IMF
EBV	-2.3	-1.2	+10	+22	+26	-0.4	+0.2	-0.1	-0.6	-0.5
	66%	68%	67%	65%	65%	65%	49%	58%	57%	48%
WGT			264 kg	560 kg	679 kg					
Avg	+2.8	+0.2	+12	+24	+31	+1.1	+1.6	+0.5	+0.5	+0.1

The youngest bull in the sale although you would never pick it walking through the pens. The Oatley factory pulls through again on this one. Upland U56 is a long, well balance bull which boasts ample hind quarter and depth through his middle

Purchaser Price

LOT:16 RIMU UNITED U5 P/Sc 741230005E

BORN: 14.07.2023 DNA: Dam & Sire Verified. Heterzygous Polled



SILVERSTREAM NAVARRO N45
SILVERSTREAM PACKER P196 PP
SILVERSTREAM DIMSIE E28 P

SILVERSTREAM NAPSTER N103 P
WHANANAKI RIELY R38 P
WHANANAKI NEVA N18

	GL	BW	200 WGT	400 WGT	600 WGT	SS	EMA	Rib	Rmp	IMF
EBV	-3.8	-0.9	+2	+9	+8	+0.3	+0.9	0.0	-0.2	0.0
	51%	64%	61%	63%	66%	54%	35%	39%	37%	33%
WGT			294 kg	574 kg	658 kg					
Avg	+2.8	+0.2	+12	+24	+31	+1.1	+1.6	+0.5	+0.5	+0.1

Another E grade sire, a very smooth bull with a good strength of bone and a lot of width through his top. Don purchased the dam of this bull at the Whananaki dispersal sale as an in-calf 2-year-old, he was taken by her moderate size, kind disposition and out cross pedigree.

Purchaser Price

LOT:17 RIMU UMBRIA U50 P/Sc 741230050C

BORN: 10.09.2023 DNA: Dam & Sire Verified. Heterzygous Polled



SPARROWS BRAXTON 519C P (IMP CAN)
SILVERSTREAM OATLEY PP
SILVERSTREAM OCELOT I100 P

SILVERSTREAM HOLSTER H187 P
RIMU GEMMA 1807 P

	GL	BW	200 WGT	400 WGT	600 WGT	SS	EMA	Rib	Rmp	IMF
EBV	-0.8	+0.6	+14	+34	+42	+0.4	0.0	-0.4	-1.1	-0.
	65%	67%	66%	67%	69%	63%	47%	56%	55%	47%
WGT			293 kg	578 kg	669 kg					
Avg	+2.8	+0.2	+12	+24	+31	+1.1	+1.6	+0.5	+0.5	+0.1

There's some real quality about this bull. One more great example of the Holster, Oatley progeny. This bull is beautifully balanced . He's thick and square but not tall, a moderately framed bull. Tidy, clean sheathed and very sound.

Purchaser Price

LOT:18 RIMU USMAN U23 PP 741230023C

BORN: 09.08.2023 DNA: Dam & Sire Verified Homozygous Polled



TURNBULLS DUTY-FREE 358D (IMP CAN)

SILVERSTREAM SAWLEY S11 PP
SILVERSTREAM IVY O160 P

SILVERSTREAM HOLSTER H187 P

RIMU GRACIE 2026 P

	GL	BW	200 WGT	400 WGT	600 WGT	SS	EMA	Rib	Rmp	IMF
EBV	-2.8	+0.8	+11	+27	+35	+0.9	+1.4	+0.9	+1.0	-0.3
	58%	59%	61%	63%	66%	55%	39%	48%	46%	39%
WGT			300 kg	602 kg	701 kg					
Avg	+2.8	+0.2	+12	+24	+31	+1.1	+1.6	+0.5	+0.5	+0.1

This is a smart looking homozygous polled bull. A Sawley son, very tidy underneath, good scrotal size and you've got to appreciate the hind quarter on this guy. A smooth, soft skinned bull.

Purchaser Price

LOT:19 RIMU USHERWOOD U29 PP 741230029D

BORN: 14.08.2023 DNA: Dam & Sire Verified Homozygous Polled

TURNBULLS DUTY-FREE 358D (IMP CAN)

SILVERSTREAM SAWLEY S11 PP
SILVERSTREAM IVY O160 P

SILVERSTREAM OATLEY PP

RIMU FLEUR 2004 P

	GL	BW	200 WGT	400 WGT	600 WGT	SS	EMA	Rib	Rmp	IMF
EBV	-2.9	-0.1	+10	+24	+32	+0.7	+0.4	+0.6	+0.5	-0.4
	59%	60%	62%	64%	66%	56%	40%	49%	48%	39%
WGT			295 kg	602 kg	674 kg					
Avg	+2.8	+0.2	+12	+24	+31	+1.1	+1.6	+0.5	+0.5	+0.1

Another Sawley son, showing a prominent hind quarter and good reproductive features. A tidy, smooth, homozygous polled bull.

Purchaser Price

LOT:20 RIMU UTAH U7 P 741230007B

BORN: 24.07.2023 DNA: Dam & Sire Verified Heterozygous Polled

TURNBULLS DUTY-FREE 358D (IMP CAN)

SILVERSTREAM SAWLEY S11 PP
SILVERSTREAM IVY O160 P

SILVERSTREAM HOLSTER H187 P

RIMU ROSE 2040 P

	GL	BW	200 WGT	400 WGT	600 WGT	SS	EMA	Rib	Rmp	IMF
EBV	-2.4	-1.7	-6	+3	-4	+0.1	+0.3	+0.3	+0.2	-0.3
	59%	60%	61%	63%	65%	55%	39%	48%	46%	39%
WGT			262 kg	512 kg	586 kg					
Avg	+2.8	+0.2	+12	+24	+31	+1.1	+1.6	+0.5	+0.5	+0.1

Peas in a pod with the last bull. Sawley definitely marks his progeny, clean, soft with a prominent hind quarter. This bull is slightly cream in colour.

Purchaser Price





THANKS YOU FOR YOUR INTEREST IN OUR BULL SALE

A large herd of white cattle, likely Friesian or similar breed, is grazing on a lush green hillside. The cows are densely packed in the foreground, with many looking towards the camera. The background shows a continuation of the green slope, dotted with more trees and a few distant buildings under a bright blue sky with wispy white clouds. The overall scene is a peaceful pastoral landscape.

to be filled in and handed to a livestock agent before leaving the sale

Buyer number:

Name:

Address:

.....

..... Post Code.....

Phone:

Purchases:

Lot # \$.....

Lot # \$.....

Lot #..... \$.....

Lot # \$.....

Lot # \$.....

Transport Instructions:.....

.....

.....

.....

..... NAIT #

Signature Date





Disirabull Photography and Design
specialising in livestock sale catalogues

Emma Owen; 027 892 3720 emmaowen122@gmail.com